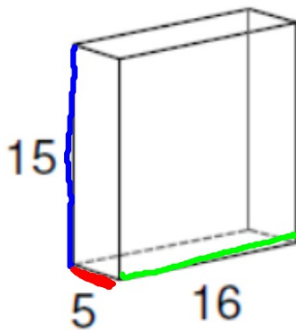
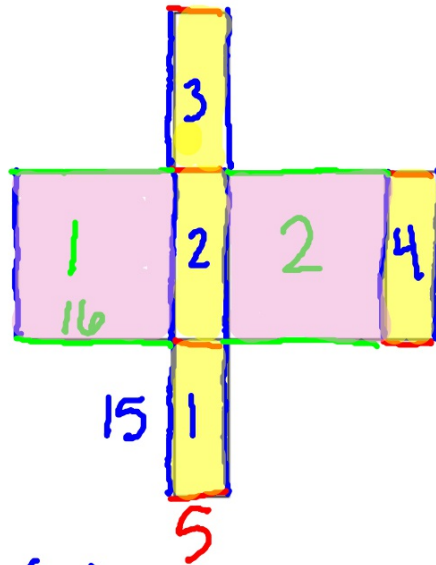


Guided Notes: Surface ^{Square units} Area - 3D Figure

EX1.



Rectangular
Prism

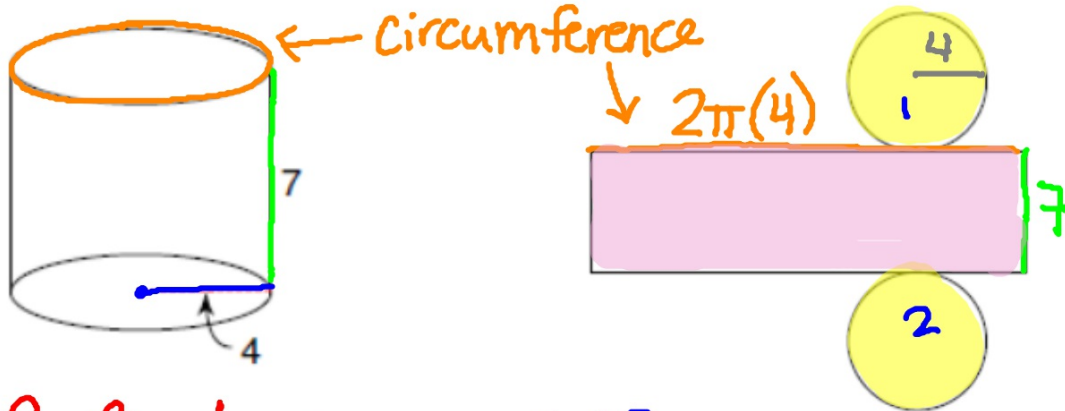


$$15(5) = 75 \quad (4) = 300$$

$$16(15) = 240 \quad (2) = 480$$

$$300 + 480 = 780 \text{ units}^2$$

EX2.



Cylinder

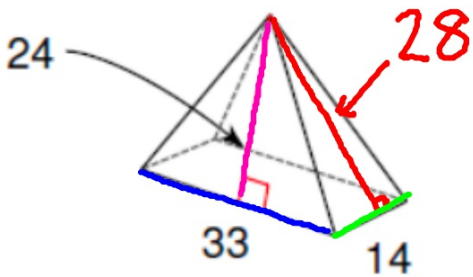
$$\begin{aligned}\pi(4)^2 &= 50.27(2) \\ &= 100.54\end{aligned}$$

$$7(2\pi(4)) = 175.93$$

$$100.54 + 175.93 = 276.50$$

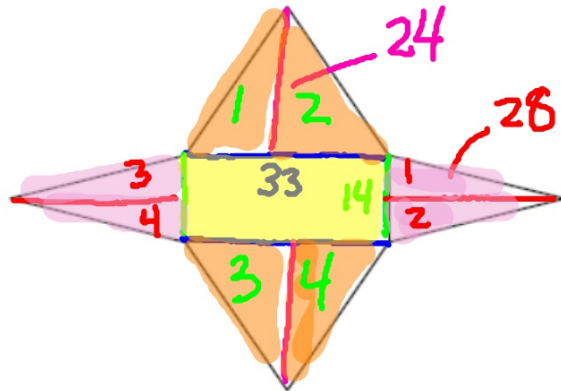
units²

EX3.



Pyramid

$$33(14) = 462$$



$$462 + 392 + 792$$

$$= 1646 \text{ units}^2$$

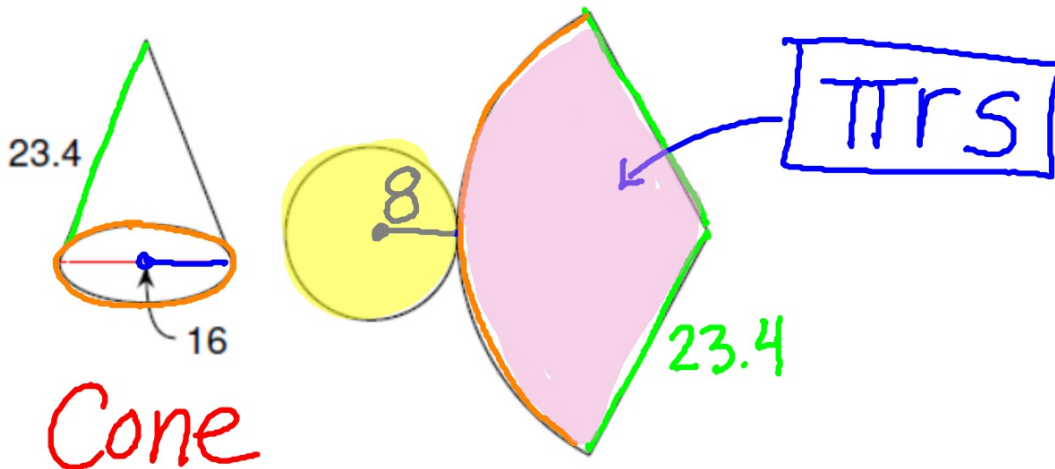


$$\frac{1}{2}(7)28 = 98(4) = 392$$



$$\frac{1}{2}(24)(16.5) = 198(4) = 792$$

EX4.

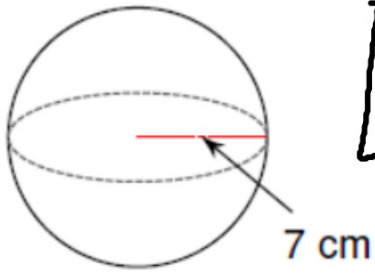


$$\pi(8)^2 = 201.06$$

$$\pi(8)(23.4) = 588.11$$

$$201.06 + 588.11 = 789.17 \text{ units}^2$$

EX5.



$$4\pi r^2$$

$$4\pi(7)^2 = 615.75 \text{ cm}^2$$

Homework is Page 7.2 in Packet